



PA FEI – AI in Finance Strategy Workshop

April 21, 2026

Mike Kokotajlo & Caroline Marr

Join by Web

PollEv.com/aifei

Join by Text

Send **aifei** and your message to **22333**

Join by QR code
Scan with your camera app





Today's Objectives

KPMG's presentation will provide practical applications of AI that can be used by finance professionals to elevate their strategic impact across their organizations. Topics will include automation of routine processes, predictive forecasting, and enhanced analytics to highlight how AI can improve accuracy, reduce cycle times, and provide deeper insights for decision support.



Share AI and Agentic AI core concepts, market trends, and key enablers



Discuss AI use cases within Accounting and Controllingship functions



Discuss a pragmatic approach to unlock the true value of AI in Finance



Key Trends & Point of View

Nearly everyone has a view, but no one knows who's right

'Agents will join the workforce in 2025 and materially change output'
- OpenAI CEO

'AI could eliminate up to half of all entry-level white-collar jobs, potentially leading to unemployment as high as 10 - 20% within 5 years' - Anthropic CEO

'Prove AI can't do it before hiring' - Shopify CEO

'AI innovation far exceeding customer adoption' - Salesforce CEO

"AI Bubble Warning: Analysts Predict 40% of AI Agent Projects Will be Scrapped Due to Unclear Business Value and Escalating Costs" - Gartner

"Firms Made Phony AI Claims - THE SEC Just Issued Its First Warning" - NY Times

The 95% Problem: MIT Study Reveals Near-Total AI Failure in Business

AI Adoption Linked to 13% Decline in Jobs for Young U.S. Workers, Stanford Study Reveals

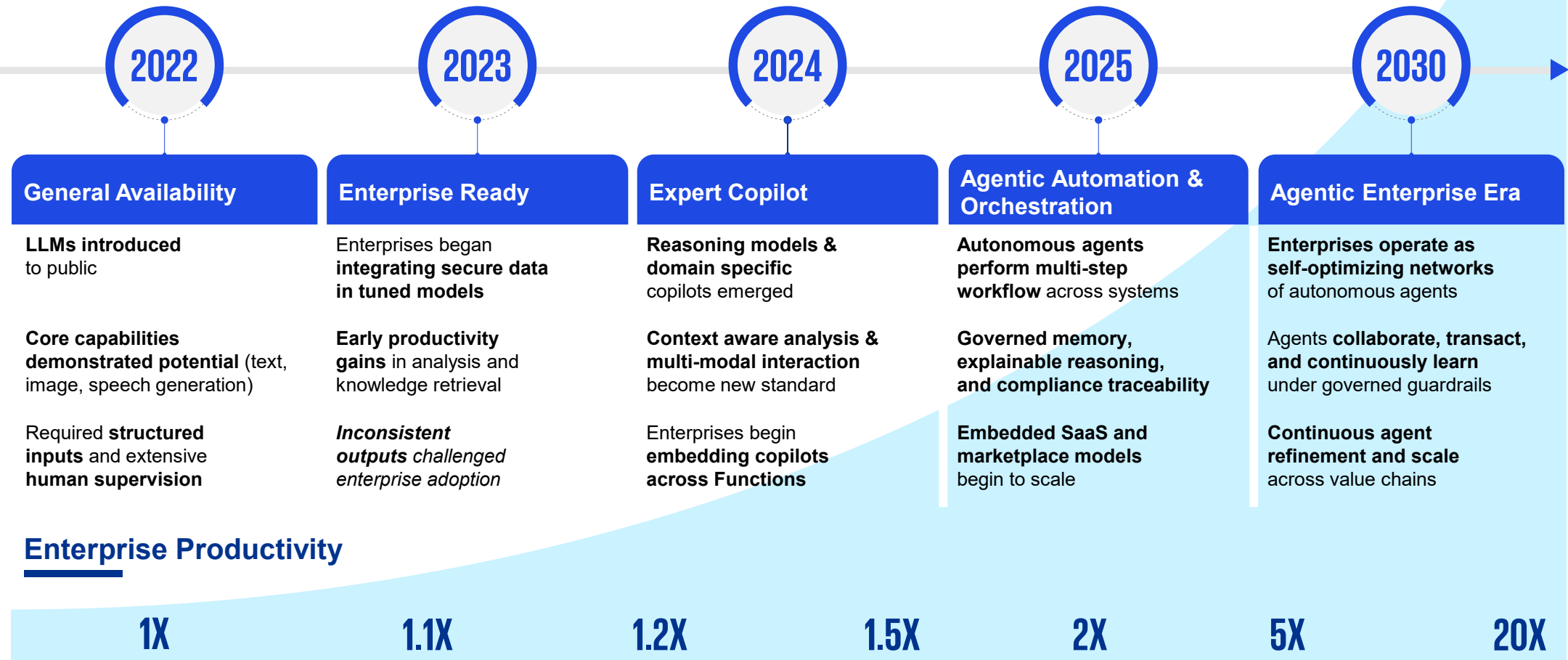
"I WOULDN'T TRUST IT" - SVP of AI Strategy, Apple

"The next generation of AI will reshape every software category and every business" - Microsoft CEO

"Mitigating the Risk of Extinction from A.I. Should be a Global Priority, say Industry Leaders" - The Guardian

How did we get here, and where are we headed?

GenAI radically changed how the workforce interacted with technology - Agentic AI is redefining productivity & enterprise value creation



The Era of Pilots Is Ending: Agentic operations are becoming the new system of work



Enterprise Are Moving Beyond Pilots

Leaders now need agentic systems that scale, govern, and deliver outcomes



Work Has Outgrown Linear Automation

Enterprise work is multi-step, multi-app, and multi-system—requiring AI that can reason, plan, and act



Traditional Tools Are Breaking

RPA and copilots fail under production complexity due to fragile reasoning and missing audit trails



AI is Becoming the New System of Work

“State the goal → AI figures out the steps → outcome delivered.”



Market Adoption is Accelerating

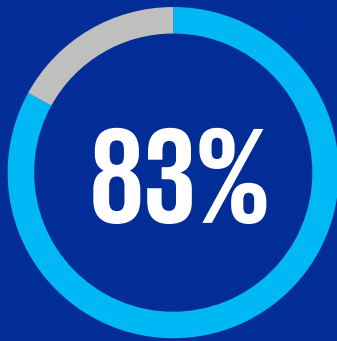
Majority of enterprises plan to adopt agentic AI over next 12 months; we’re seeing significant demand from CFOs, CAOs, Controllers & other leaders



Agentic AI is no longer a technology trend—it’s the foundational shift redefining how work gets down across the enterprise

Enterprise AI across industries

Investment projections nearly double year-over-year



Improved analytics from the C-suite remains a top ROI metric for the second quarter.

AI agent deployment reaches new levels

73% Automating workflows that span multiple functions



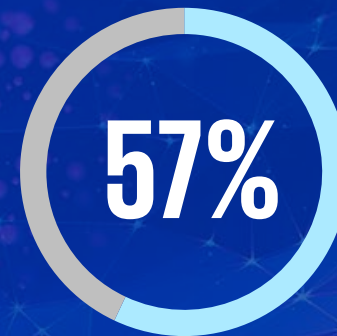
53% Routing information or decisions between teams



51% Providing shared knowledge bases or unified dashboards

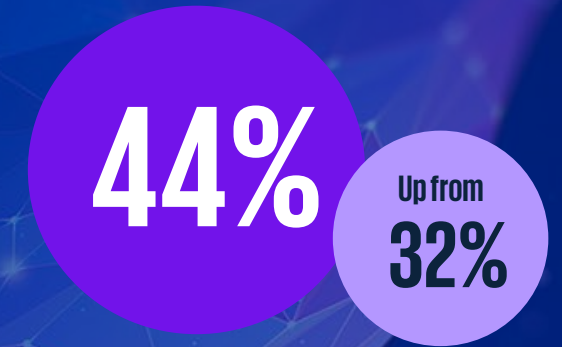


The great skills reset



expect humans to **primarily manage and direct AI agents** in the next two to three years.

Governance is a prerequisite for scale

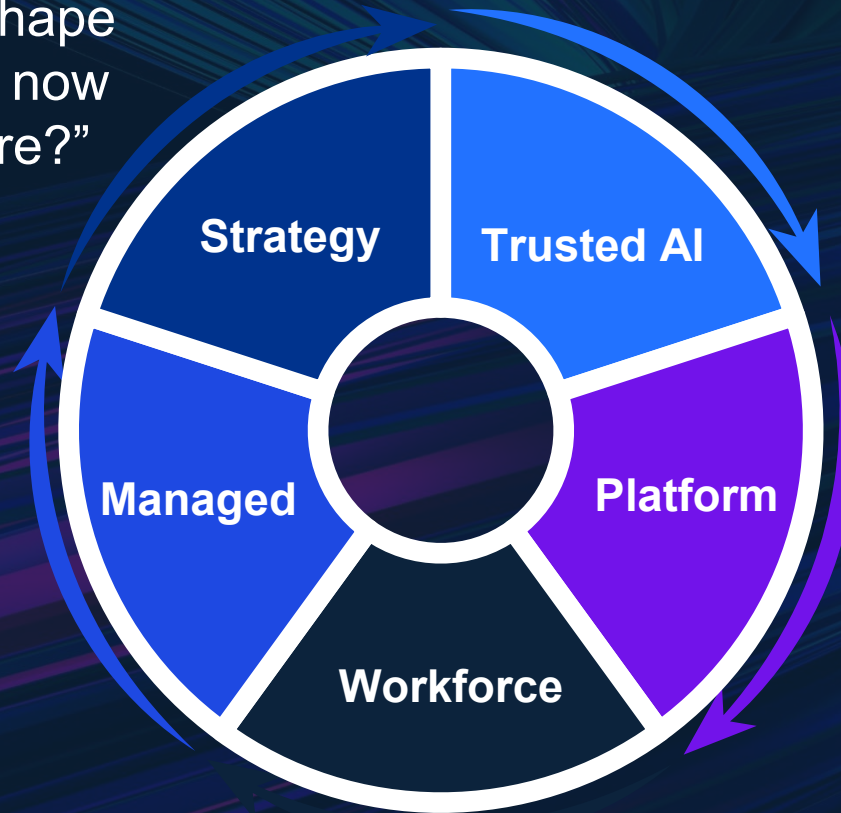


Leaders cite **cyber and employee misuse** as the most difficult society-wide challenge with AI between now and 2030.

Five Fundamental Questions Facing Every Leader

“How will AI reshape the value chain now and in the future?”

“Is my data secure and can I rely on AI outputs to make decisions?”



“Am I better off turning this over to a 3rd party who can maximize AI value for me?”

“Is my infrastructure and data ready for maximum gain?”

“How will AI redefine the skills, roles, and metrics I need?”

Key components required to unlock enterprise value



The Future of Finance:

Our 5 hypotheses

01

80% of today's Finance activities will be automated

02

AI becomes the modern enterprise operating system

03

Traditional corporate functions will converge, giving rise to smaller teams with bigger outputs

04

Profile and career path of the finance professional is dramatically shifted in this new world

05

Criticality of controls increases as Agents amplify Enterprise risk

Finance will be smaller, smarter, faster, better integrated and more strategic.

Intro to AI Use Cases

Agentic Finance

Leverage the right technology for the right purposes

Automate tasks, augment judgement, & orchestrate outcomes

UI / UX - Agentic Command Center

Orchestrate outcomes and value

Automation

Rules based Executor

Automate known steps, every time, the same way

- **Transfer data**
- **Calculations**
- **Sort / filter**
- **Workflows**
- **Extract**
- **Aggregate**
- **Reconcile**

USE WHEN

- Repetitive & rules based?
- Structured inputs?
- Predefined rules for decisions?

Traditional AI / ML

Predictive Optimizer

Learns, predicts and optimizes under explicit constraints

- **Predict**
- **Recommend**
- **Optimize**
- **Detect Anomalies**
- **Advanced Classification**

USE WHEN

- Predictions based on patterns?
- Analyze large amounts of structured data?
- Well defined problem with known data?

Generative AI

Turbocharged AI Companion

Understands, explains, & creates content

- **Expand/Create**
- **Summarize**
- **Translate**
- **Search / Extract**
- **Classify / Categorize**

USE WHEN

- Generate new content or assets?
- Generate insights or ideas?
- Outputs requires synthesis, judgement or interpretation?

Agentic AI

Autonomous Operator

Plans, reasons, and acts in pursuit of prescribed goals

- **Autonomous Action**
- **Multi-Step Decision**
- **Self Learn & Adapt**
- **System Coordination**

USE WHEN

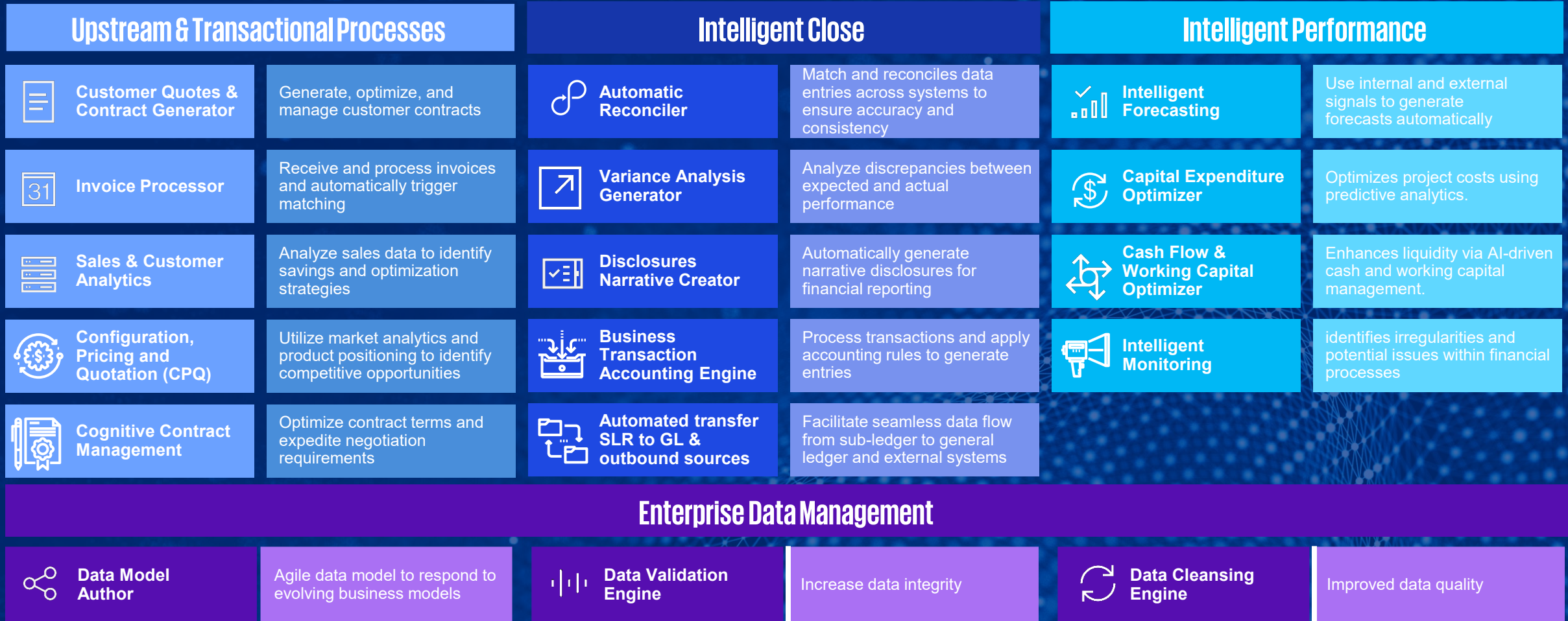
- Multiple systems or workflows need to be coordinated?
- Process likely to evolve over time?
- Highly variable inputs and contexts?

Intelligent Cloud

Platforms, Infrastructure, Data & Integration

Where Are Finance Teams Leveraging AI?

End-to-End Insights



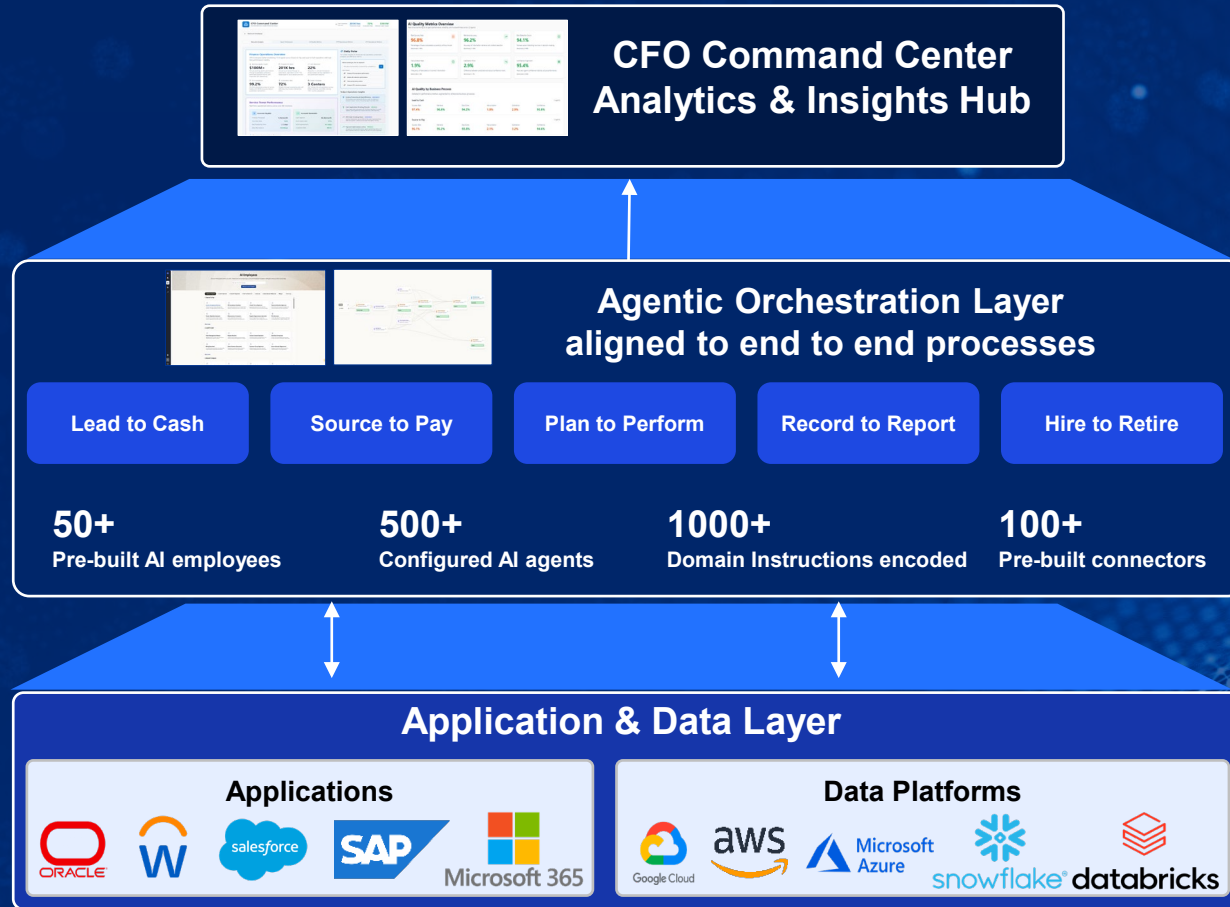
Macro view into the Agentic AI Solution Landscape

| | Enterprise SaaS | Vertical Specialists | Agentic Platforms | Hyperscaler Platforms |
|-------------------------------------|---|--|---|---|
| | <i>Embedded AI capabilities within core ERP, CRM and enterprise platforms</i> | <i>Pre-built solutions for specific finance processes or sub-process</i> | <i>Cross-functional, multi-system workflow and decision orchestration</i> | <i>Highly extensible AI suite for enterprise scale and custom solutions</i> |
| <i>Speed to value:</i> | Weeks | Weeks | Weeks to Months | Months |
| <i>Value chain coverage:</i> | Moderate | Targeted | High | High |
| <i>Multi-ERP / diverse stack:</i> | Best within own stack | Moderate | Designed for Orchestration | Highly Extensible |
| <i>Complexity to implement:</i> | Moderate | Low to Moderate | Moderate | High |
| <i>Governance & compliance:</i> | Strong enterprise Controls | Strong within domain | Improving, varies by vendor | Strong infrastructure, custom app controls |
| <i>Typical 3 year economics:</i> | \$\$ | \$ - \$\$ | \$\$ | \$\$\$ |

Rise of Agentic Orchestration Platforms

Built for Trust, Scale, and Value

Platform Overview & Ecosystem Position



Key Capabilities

Enterprise-Grade Governance

Security, assurance, controls, complete audit trail, and documentation for every action

Agentic Control Plan

Enterprise Context Graph, Procedural Memory, Auto Learning, Auto Builder

Agent Orchestration

Multi-agent pipelines; agent-to-agent tool calling & delegation; multi-model routing

Observability

End-to-end decision lineage, drift detection, automated evals, custom dashboards by persona

AI Led, Human Assisted

100+LLMs, 200+ pre-built agents, Integrations with 1000s of MCPs, purposeful HITL checkpoints

Codified Expertise

Embedded leading practices, decision logic, policies and process knowledge

Commercial Rigor & Value Assurance

✓ **Value Tracking**
ROI measured per transaction

✓ **Extensibility**
Scale across all workflows

✓ **Trust**
Enterprise-ready controls

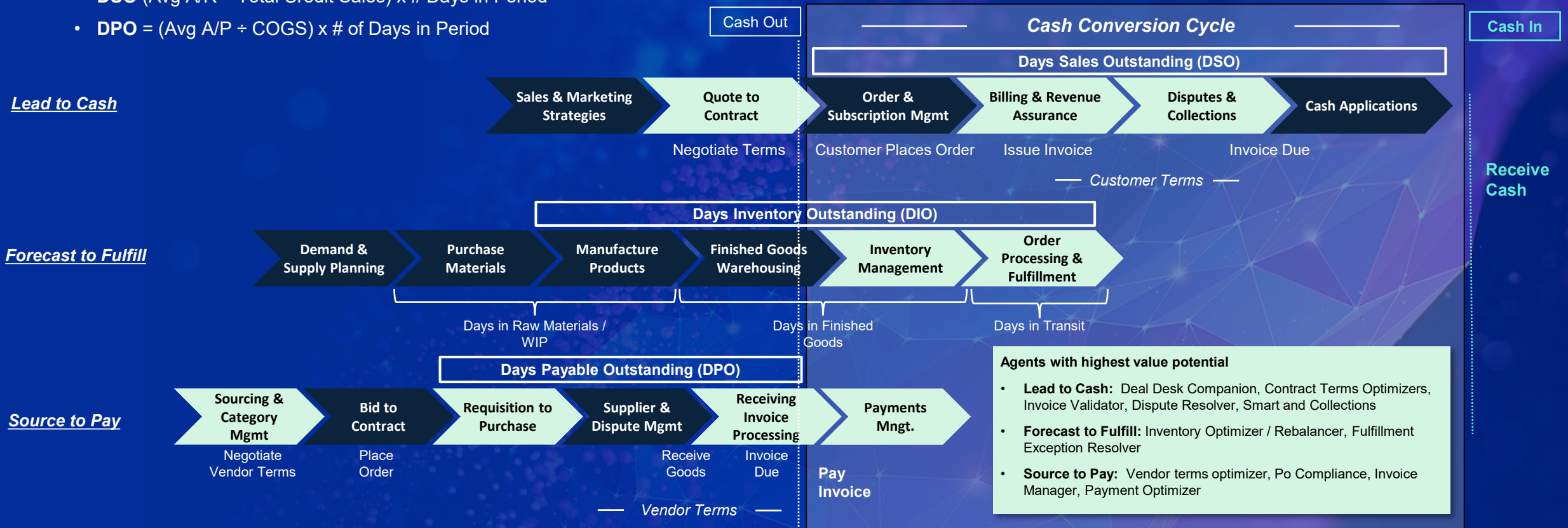
Agentic solutions need to deliver tangible outcomes



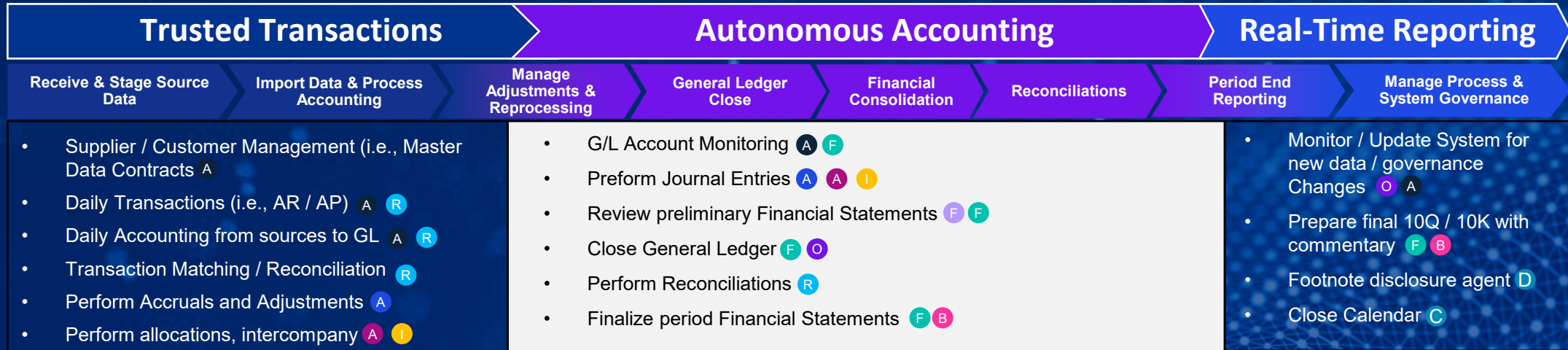
Orchestrating outcomes across end-to-end cash processes

Accelerate CCC to generate incremental FCF

- **Cash Conversion Cycle (CCC)** = DIO + DSO – DPO
- **DIO** = (Avg Inventory ÷ COGS) x # of Days in Period
- **DSO** = (Avg A/R ÷ Total Credit Sales) x # Days in Period
- **DPO** = (Avg A/P ÷ COGS) x # of Days in Period



Applying AI across end to end Record to Report process



Command Center Agents in the Intelligent Close



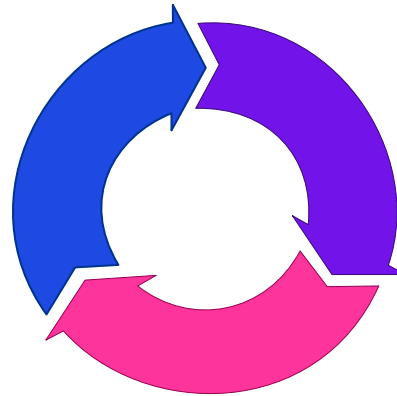
Art of the Possible: Anomaly Detection

Anomaly Detection transforms the financial close and analysis process by surfacing exceptions and enabling targeted investigations, making the process faster and more insightful across various personas within an organization.

1

Detect Anomalies

- **Highlights anomalies** at the highest level and dives deep into specific accounts to **show trends, sub-account drivers, and potential root causes**
- Provide insights on **account-based trends, seasonality, and variance drivers**
- Expedite analytics at both the **financial statement & individual account level across multiple ledgers**



2

Assess Anomalies

- Review anomalies through BI / dashboard & **Anomaly Exception Table**
- **Decide which data points are true anomalies, and which are expected values – with user actions integrated back into sources**
- Leverage **root cause commentary and workflow automation** to resolve issues quickly

3

Continuously Improve

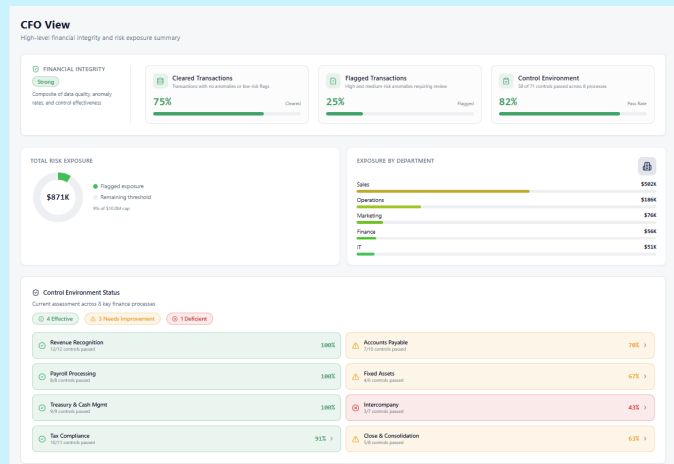
- Leverages user decisions on anomalies & **Machine Learning capabilities to train the detection model and refine the definition of an anomaly** based on changing business needs, providing **greater accuracy over time**
- Dynamically adjust variance thresholds based on **financial model inputs or projections** (e.g., CapEx, Treasury, Sales) to **ensure expected costs or fluctuations are not flagged as anomalous**
- Exponentially **decrease the time to investigate variances** as the model is trained over numerous business cycles

Agentic Anomaly Detection – A Tailored View for Every Role



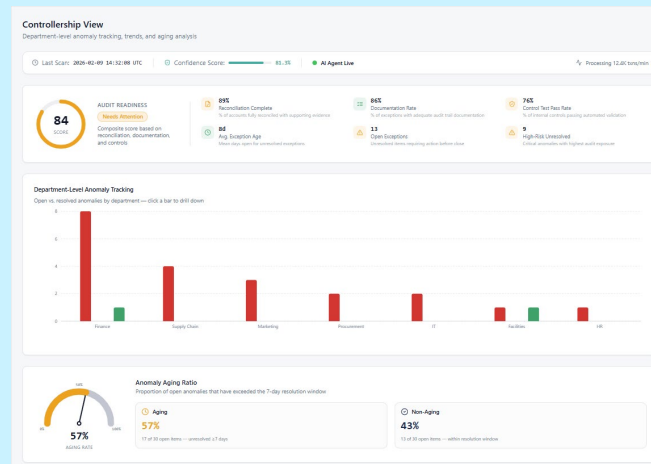
CFO

Gain strategic oversight of your organization’s financial health. Agentic anomaly detection visualizes **risk concentrations across departments**, identifies **control risks**, and supports the **investigation of top audit risks** that require executive attention.



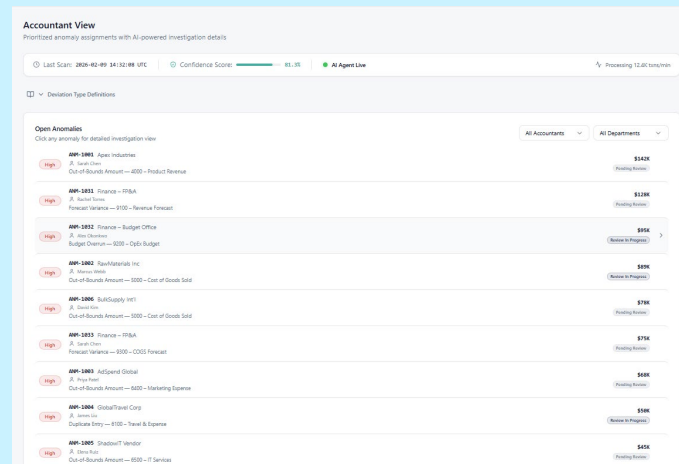
Controller

Shift from reactive monitoring to **proactive compliance**. Agentic anomaly detection provides **real-time visibility** into anomaly resolution status and **aging** with powerful drill-down capabilities, ensuring the organization auditability.



Accountant

Resolve financial anomalies with maximum efficiency. The **anomaly worklist** prioritizes open anomalies by risk level and amount, offering **one-click access to AI-assisted investigation tools** to accelerate resolution.



AI enabled planning & analytics

Four tightly integrated components that enable faster, more accurate planning and analytics

Components

Advanced predictive techniques

Various techniques including the latest Machine Learning techniques are rapidly tested to help predict specific business unit(s) and P&L line(s) in scope.



Better data and signals

Incorporate external data and signals from KPMG Signals Repository along with internal financial or operational drivers to add context and predictive power.



Scenario planning

Create specific forecasts by P&L line item, geographic region, brand, channel, etc. Levers can be adjusted to model impact of different scenarios at key dimensions.



Evolution & integration

Integration of models and results across different business functions or different levels of the hierarchy, which become more accurate over time.



Business Value

Accuracy

80%+

increase in forecast accuracy
(reduction in error versus actuals)

Cost

30%+

savings in labor costs for the
monthly planning process

Speed

5-6x

improvement in cycle time to
receive initial forecast results

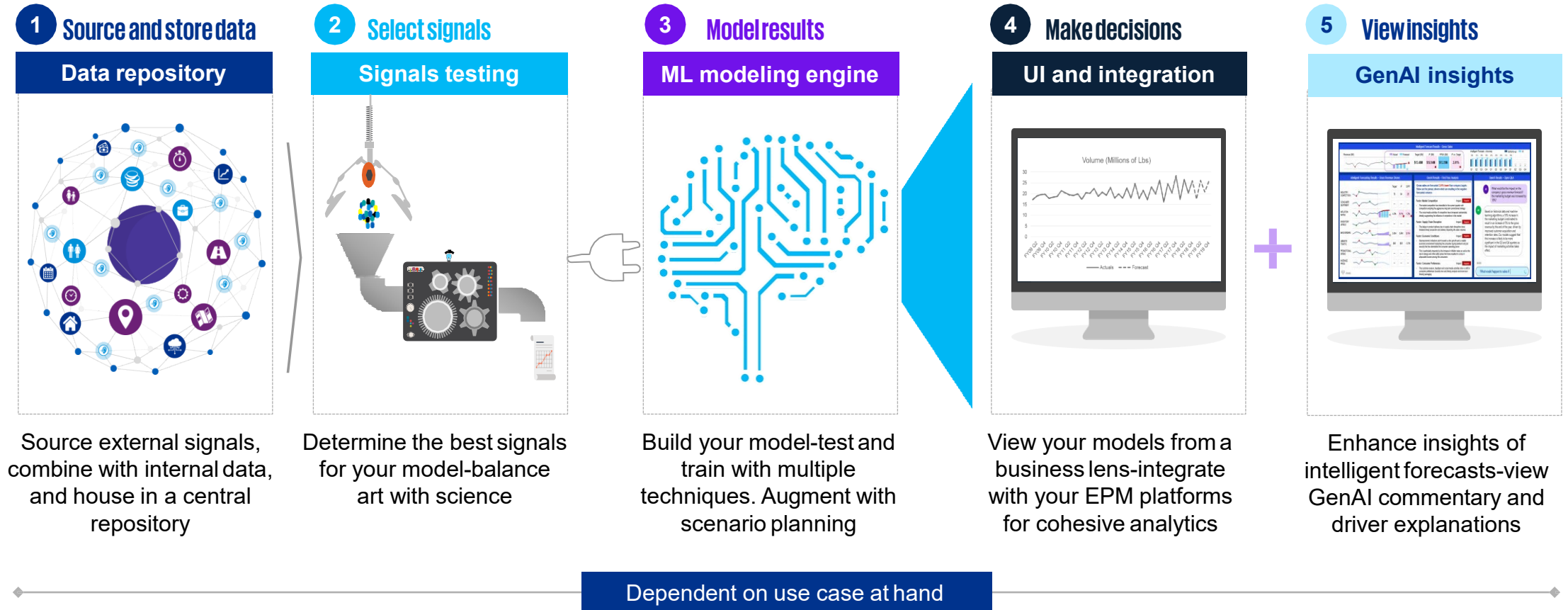
Insights

10+

new signals included in
forecasts and scenarios

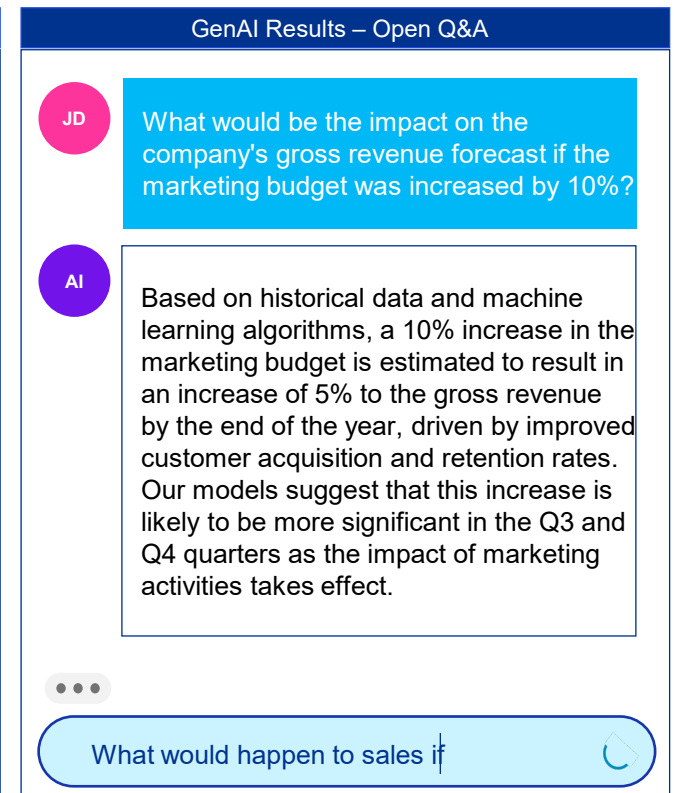
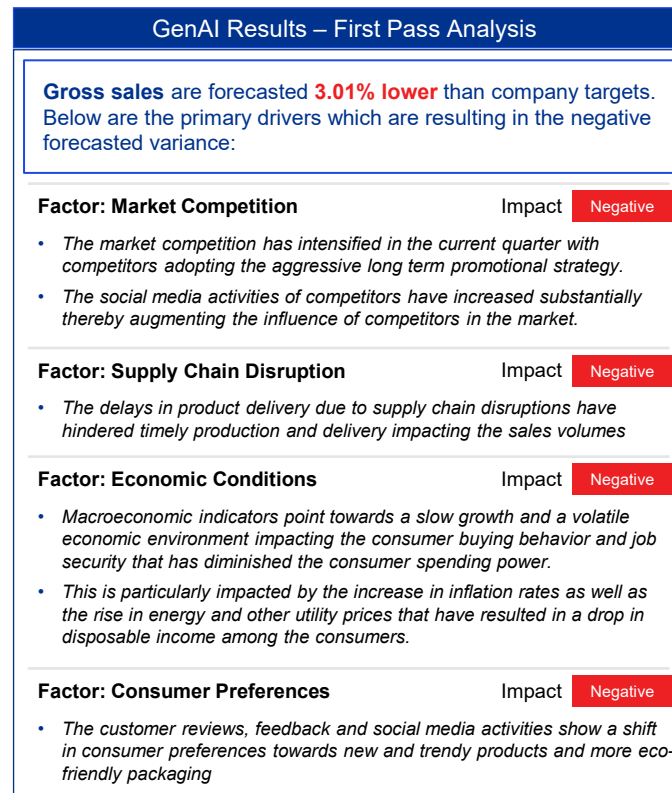
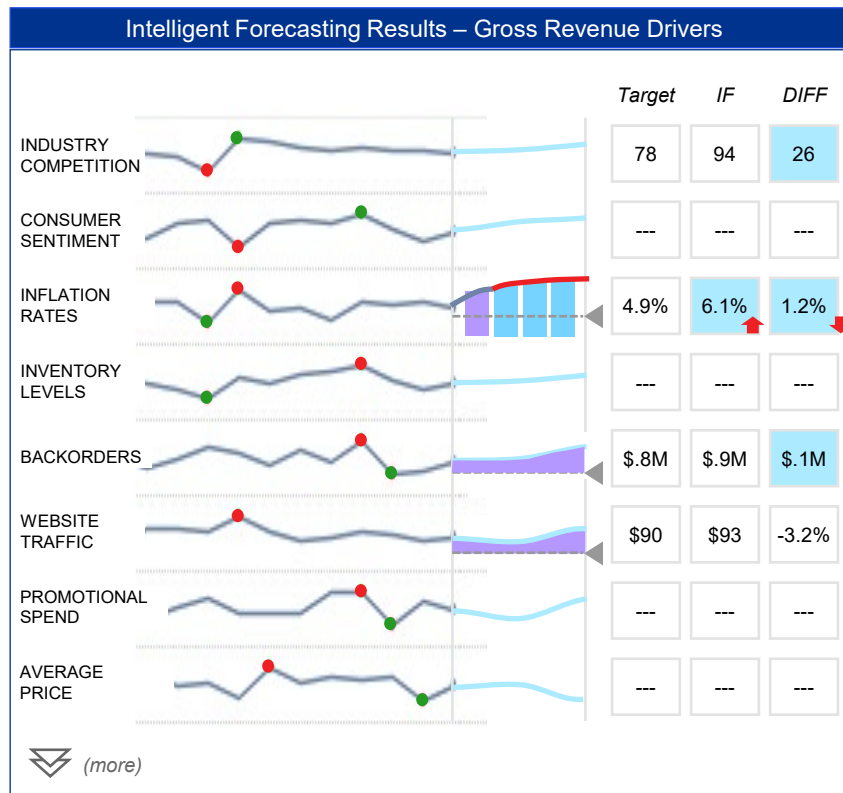
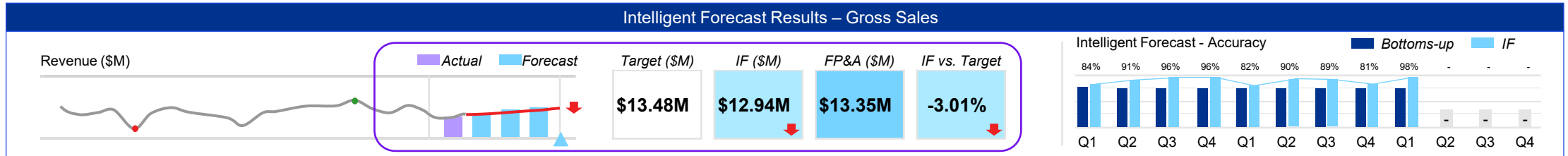
Approach to intelligent forecasting & analytics

Fit for purpose approach that integrates with your existing processes and systems to unlock the full value



Key Outputs of an Intelligent Forecast

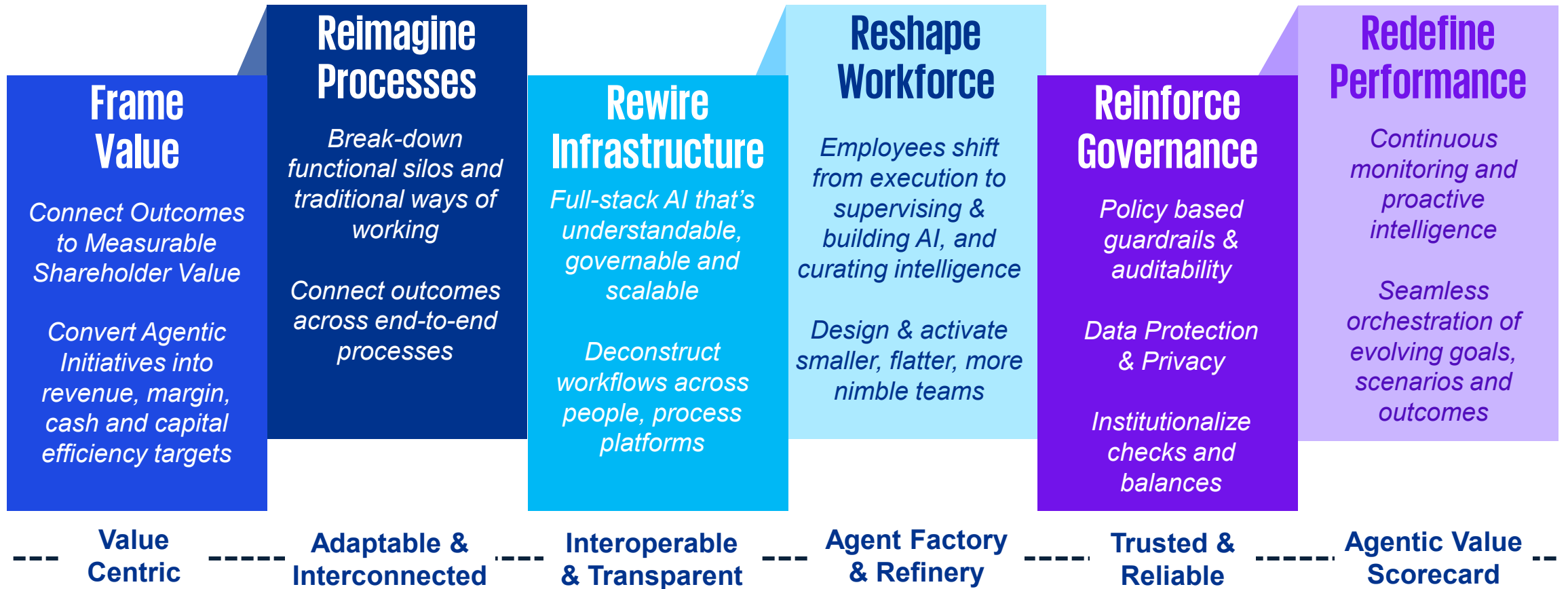
Intelligent forecasting is a customizable solution for companies to embrace data-driven planning, which is integrated into your existing process and systems to provide more automated and accurate forecasts.



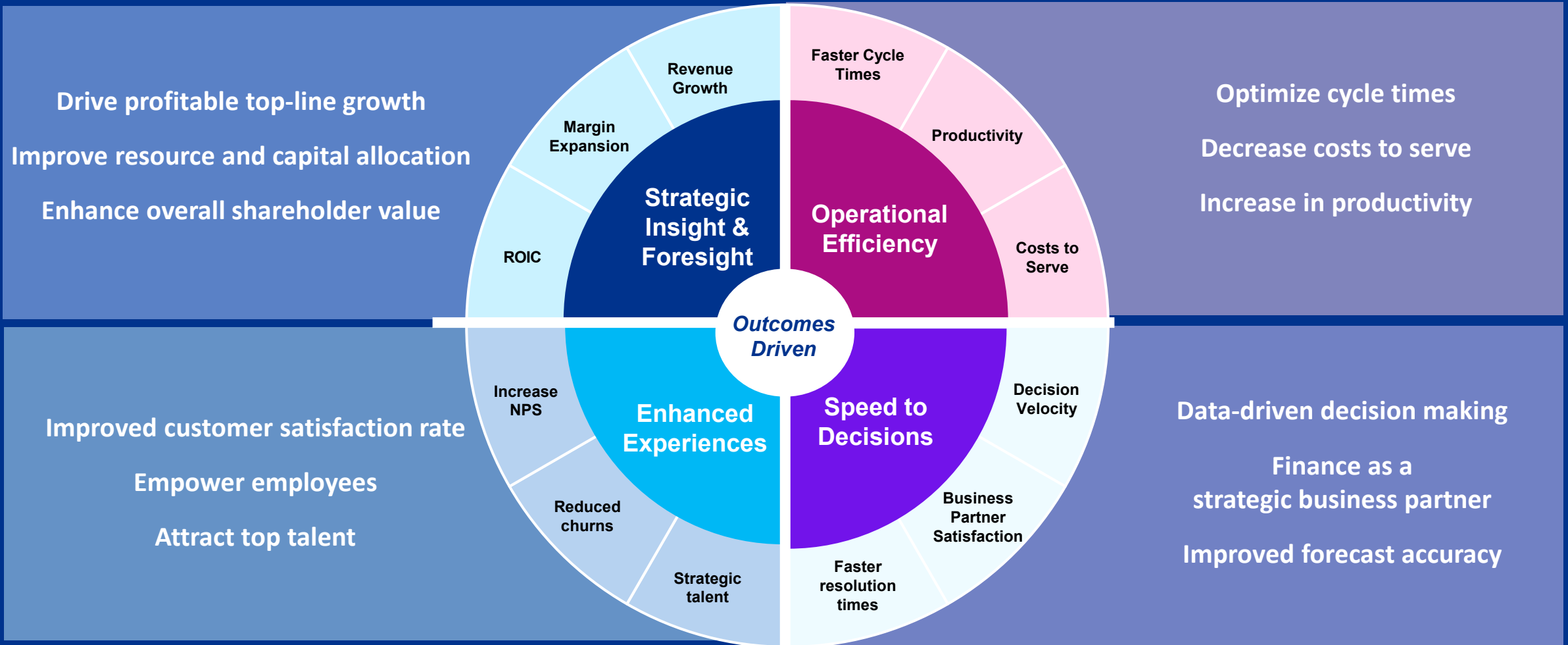
Keys to Unlocking Value with AI for Finance

Path to AI enablement

The shift to agentic finance will be hard, messy and unavoidable - those that fail to act will no longer be relevant



AI solutions need to deliver tangible value



Critical enablers to accelerating AI adoption

Re-imagine workflows, not just the agent

Design people, process, and agents to work together

Start with High-Impact, Right-Fit Use Cases

Prioritize complex, high-value, low-risk finance tasks

Treat agents like employees

Define roles, KPIs, and enable continuous improvement

Build Evaluation and Monitoring Early

Simulate, test, and track every workflow interaction

Keep Humans in the Loop

Design clear validation, escalation, and collaboration paths

Reuse Components via Central Platform

Standardize prompts, connectors, and governance services

Embed architecture, compliance and risk

Design secure, resilient, audit-ready AI frameworks

Drive Adoption and Change Management

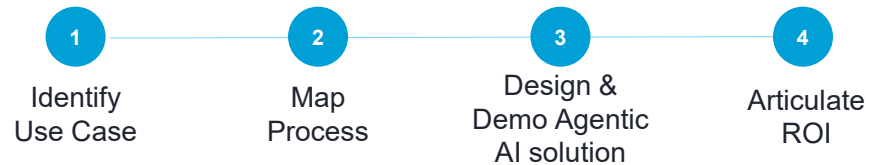
Train users, build trust, and measure business impact

How to get started

Start with Agentic AI Clinic....

Your Path to Tangible AI Results

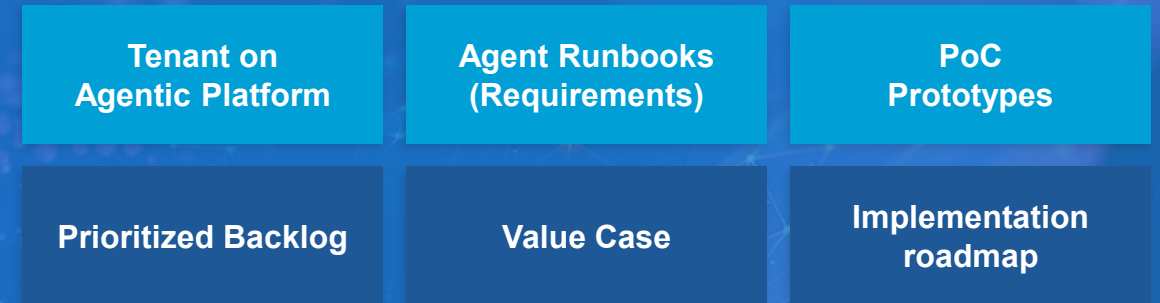
Half-Day Immersive Session



- **High-value use-cases** identified by experts for agentic transformation to ensure tangible results
- **Same-day deliverables**, including a live demo built during the session showing your workflow in action
- **Clear next steps** with a concrete take-forward plan

... Accelerate to a full Proof of Concept & Roadmap to Scale

Structured 4-6-week engagement delivering proven prototypes, a prioritized opportunity backlog, and a complete agentic transformation roadmap.



KEY ACTIVITIES

- Rapid diagnostic & stakeholder interviews
- Visioning session on future of AI in your function
- Outside-in & inside-out baseline metrics
- Opportunity prioritization & value case
- 2–3 Agentic PoC builds with iterative testing
- Agent runbooks & technical architecture
- Synthetic & client data generation for PoC
- Define data quality standards for production

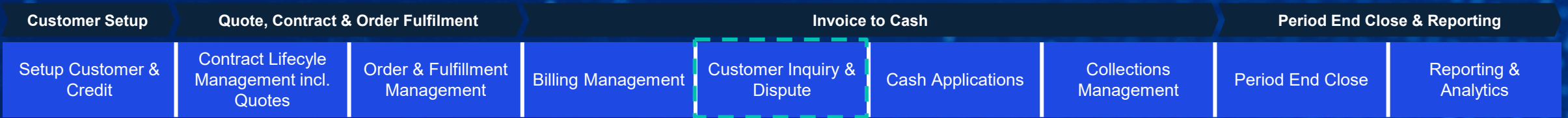
Questions



Appendix



L2C Agent: Dispute Resolver



Common Client Challenges



- Slow triage and long resolution times
- Disparate data across systems requiring extensive manual research
- Leakage from inaccurate validation of disputes

Client Value Proposition

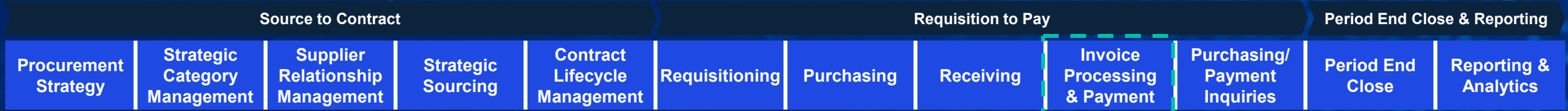


- Accelerates dispute resolution, optimizes DSO
- Minimizes leakage by ensuring accurate validation of disputes
- Automates respective research and documentation tasks

Dispute Resolver Workflow

| Data Sources | Key Activities | Outputs |
|---|---|--|
| <ul style="list-style-type: none"> • ERP / Billing systems • Order Management & Fulfillment • CPQ & CLM systems • Customer portal / mailbox • Workflow / case management tools | Ingest customer dispute | <ul style="list-style-type: none"> ▪ Extracted dispute and associated customer details ▪ Decision on go-forward action for dispute ▪ Communication to send to customer ▪ Ticket creation, if escalation required |
| | Extract customer details and sentiment from dispute | |
| | Ingest contract terms, CRM data, billing data | |
| | Classify disputes to determine next steps | |
| | Determine optimal next steps / action plan | |
| | Escalate complex disputes if needed and create a ticket | |
| Generate and send professional correspondence to the customer | | |

S2P Agent: Payment Schedule Optimizer



Common Client Challenges



- Inconsistent / not standardized payment schedules and frequent exceptions
- Suppliers paid earlier than required
- AP/payments systems not designed to optimize cash flow, but to accelerate payments
- Missed opportunities to improve working capital through strategic payment scheduling

Client Value Proposition



- Align payments with standardized AP policies (leading practice payment schedules)
- Track exceptions to standard payment schedules
- Enable Treasury / FP&A to perform more accurate cash flow forecasting
- Reduce time spent on manual payment run reviews

Payment Schedule Optimizer Workflow

| Data Sources | Key Activities | Outputs |
|---|--|--|
| <ul style="list-style-type: none"> ▪ Policy system (Client AP policies) ▪ ERP (Payments module) | Ingest historical payments from invoice register report | <ul style="list-style-type: none"> ▪ Invoice Compliance status ▪ Email to AP with non-compliant invoices by vendor and corrective action recommendations |
| | Ingest documented vendor exceptions | |
| | Ingest AP Payments policy including payment run schedule (e.g., twice weekly on Monday and Thursday) | |
| | Compare each invoice paid date with payment run schedule policy, invoice due date, and documented exceptions. Determine compliance or non-compliance | |
| | If compliant, no further action required | |
| | Generate reports summarizing past payments and optimization recommendations | |
| | If non-compliant, email AP with non-compliant case and provide corrective actions | |