

FEI-LA NEWS

WHERE ENGAGED FINANCE LEADERS THRIVE



Thankful for You

I hope you had a great Thanksgiving holiday, celebrating with family and friends!

Reflecting during this time of year, FEI is high on my list of things I am thankful for.

I am grateful for all of you and the relationships we have developed together. We have built an amazing Finance community in the Los Angeles area and it is special because of you - thank you!

I wish you all a wonderful holiday season and look forward to connecting in 2025!

Jason Shapiro
Chapter
President

FEI Los Angeles Spreads Holiday Cheer!

On December 7, 2024, members of FEI Los Angeles came together to participate in a citywide effort to support families staying at the Los Angeles Ronald McDonald House.

This year, our team assembled **50 holiday gift bags**, each filled with games, puzzles, toiletries, and other thoughtful comfort items to brighten the holidays for families caring for loved ones receiving treatment at local hospitals. These small acts of kindness help provide a sense of normalcy and relief during challenging times.

A heartfelt thank you to our members and sponsors who generously purchased all the items on the list and to those who dedicated their Saturday to assemble the gift bags. Your contributions continue to make a meaningful impact in our community.



Jan 16, 2025
City Club
 Los Angeles, CA



Dr. Jerry Nickelsburg

Faculty Director, UCLA Anderson Forecast; Adjunct Professor of Economics

A First Look at the 2025 Economic Forecast

Once again FEI in Los Angeles will be treated to presentation of the UCLA Anderson Forecast by the faculty director of the Forecast, Dr. Jerry Nickelsburg.

Nickelsburg is cited by the national media, with frequent mentions in the Financial Times, Wall Street Journal, New York Times, Los Angeles Times and Reuters.

Please register today. This will be another sold out event.

555 S Flower St, 51st Floor
Los Angeles, CA
4p - 8p

DRESS IS BUSINESS CASUAL

Coming Events

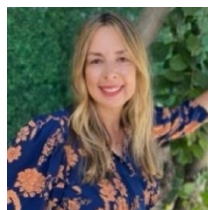
- **Jan 8, 9, 10** (Pas & LB), **21** - Area Lunches
- **Jan 16** - [2025 Economic Forecast](#) by UCLA's Dr. Jerry Nickelsburg
- **Feb 11, 12, 13, 14** (Pas & LB) - Area Lunches
- **Feb 20** - [California's Dynamic Food Industry: Insights from Top CFO's](#) a panel moderated by VACO's Frances Moreno
- **Mar 12, 13, 14** (Pas & LB), **18** - Area Lunches
- **Mar 20** - [Dr. Jen Welter](#); Defying Limits: Blueprint for Breaking Barriers and Achieving Peak Performance
- **Apr 9, 10, 11** (Pas & LB), **15** - Area Lunches
- **Apr 17** - [Partner Showcase Workshop](#); see left for details

Visit FEI Los Angeles's events page for the complete line up or [click here](#)

PD Session ADDED

Just ADDED to January's Dinner Meeting

Artificial Intelligence: Transforming the Way We Work

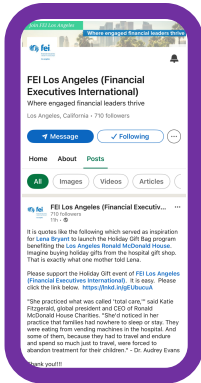


Did you know it took 75 years for the telephone to reach 100 million users, but only 2 months for ChatGPT to achieve the same milestone? AI is here, and its impact will be nothing short of disruptive.

Join FEI's **Julia Kozlov** for an engaging professional development session exploring the transformative power of Artificial Intelligence (AI) in the finance profession. Learn about its current and future impact, practical strategies for integration, and why now is the time to embrace this game-changing technology. If AI isn't on your radar, it should be!

FEI Los Angeles is where engaged finance leaders thrive.

ON THE ROAD TO a THOUSAND FOLLOWERS



714 & Counting

Please spread the word about FEI Los Angeles among your friends and colleagues. The power of our network lies in its diversity and the collective wisdom we bring to the table. By inviting others to join us, you are expanding your own network and also enriching the experiences of those around you.

Let's continue to elevate the standing of financial executives in Los Angeles together. We are on **all social platforms**.

Chapter Sponsors

We would like to extend our sincere thanks to our Chapter Sponsors. Your unwavering support is essential to the success of our finance community. We deeply appreciate your continued partnership.

When the moment arises, please remember to **BUY FEI**.

Members are the bedrock of FEI; sponsors are the lifeblood.

Platinum Sponsors



LOS ANGELES BUSINESS JOURNAL

Gold Sponsors



Days from 2025...we sure moved quickly through 2024

1 LOOK BACK

Take a moment to reflect on the year. Celebrate your achievements and learn from the things you didn't get to or wish you would've played out a different way.

2 LOOK AHEAD

What do you want to do next year? Are you growing? Do you have a plan? Where are you going to make an impact in your career? Profession? Community?

3 RE-CONNECT

Holidays are a great time to re-engage. Keep your connections healthy. This is best time to catch up over coffee or drinks. You'd be surprised what you will learn.

Los Angeles Officers



Jason Shapiro

President



Carol Smith

VP Sponsorships



Yuliya Kaminskaya

Treasurer



Ruth Cantu

VP Membership



Nicholas Koutouras

VP Programs & National Liaison



Mitchell Rusbarsky

Director & Past President



Lisa Hylton

VP Programs - Elect



Roger Stephens

Director & Past President



Brian Parisi

Secretary



Christine Bell

Chapter Administrator

Invite a friend or colleague to
join. [Click here](#)



Advancing success through information,
community and advocacy since 1931.

Financial Executives International (FEI) is a leading association comprised of nearly 10,000 members who hold positions as Chief Financial Officers, Chief Accounting Officers, Controllers, Treasurers, and Tax Executives at companies in every major industry.

FEI enhances member professional development through peer connections, career management services, conferences, research and publications.

Members participate in the activities of more than 65 Chapters in the U.S. FEI is located in Morristown, NJ. FEI is where engaged financial leaders thrive.